

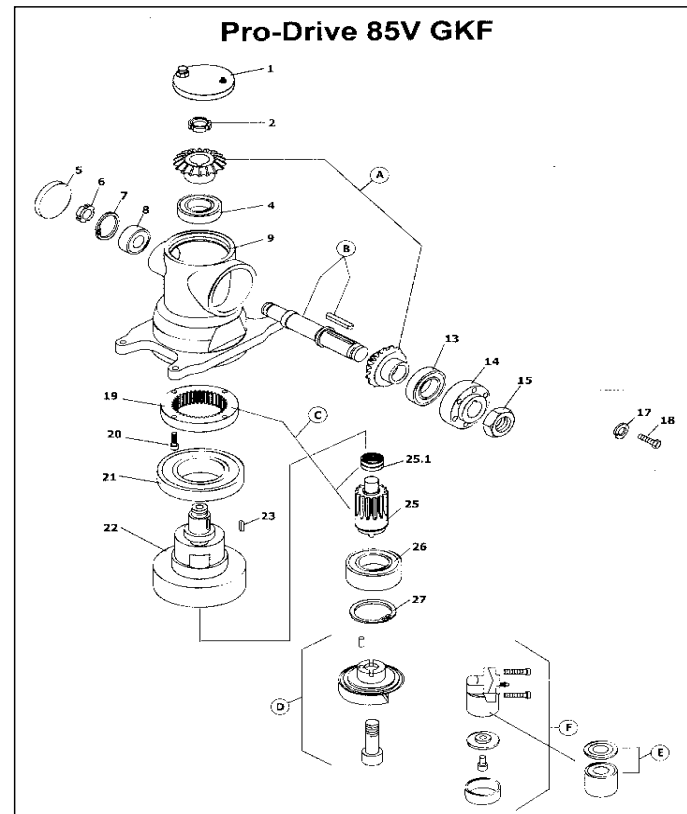
## SCHUMACHER PRO DRIVES

The Schumacher Pro-Drive uses planetary gearing to deliver a knife stroke that is always aligned with the cutter bar. 97% of the power delivered by the Pro-Drive is delivered directly to the cutting system with an absolute linear knifehead stroke. Power transfer is continuous: the gears do not stop moving to change stroke. No power is lost through ball joints, swing arms, or a change of stroke. The Pro-Drive is available in vertical or horizontal drive configuration, and is typically driven with vee belt or hydraulic pressure. Engineered and manufactured in Germany, the Pro-Drive is extremely reliable with a very efficient design. It can operate for many years with minimal maintenance or parts.

**It is paramount that it be lubricated at regular intervals. Lithium based grease can be used: 3 - 5 shots each 48hrs of operation, or more as conditions demand. The knifehead bearing should be given 1 shot at each 12hrs of operation. When new, the Pro Drive should have the cap removed on the second day of operation, and the grease topped up: see manual for details.**

Standard Schumacher Pro Drives deliver a 85mm knife stroke. This is 8.8mm greater than the 3" / 76.2mm Guards, giving a positive effect on cutting performance - especially in tough conditions.

The Schumacher Pro-Drive is a popular choice when the time comes to convert from the traditional "wobble box" to a more reliable drive. We are pleased to offer a number of "conversion kits" that can be adapted very easily and quickly. Please call either of our offices to check if a kit is available to meet your needs. Commonly, dealers choose to fabricate brackets and mount the Pro-Drive themselves. In these events, and as available, we are happy to offer components and jigs for customising knifeheads as required. Through our direct links with Schumacher, we may be able to draw on their technical expertise, to ensure the job is done right.



- |    |   |
|----|---|
| 1  | Cover                                       |
| 2  | Groove Nut M30 x 1.5                        |
| 4  | Ball Bearing                                |
| 5  | Cover VK 52                                 |
| 6  | Groove Nut M25 x 1.5                        |
| 7  | Snap Ring                                   |
| 8  | Taper Ball Bearing                          |
| 9  | Pro Drive Housing                           |
| 13 | Ball Bearing                                |
| 14 | Drive Flange                                |
| 15 | Nut M30 x 1.5                               |
| 17 | Spring Washer                               |
| 18 | Hex Bolt M8 x 20                            |
| 19 | Gear Pair                                   |
| 20 | Cylinder Bolt                               |
| 21 | Ball Bearing                                |
| 22 | Rotor for Pro Drive 85 V                    |
| 23 | Fitted Key                                  |
| 25 | Spur Gear with Needle Bearing               |
| 26 | Taper Ball Bearing                          |
| 27 | Snap Ring                                   |
| A  | Bevel Drive                                 |
| B  | Drive Shaft & Fitted Key                    |
| D  | Crank Shaft Half 17mm & Cylinder Bolts      |
| E  | Bearing & Cover                             |
| F  | Block & Bearing, Cylinder Bolt & Nylon Ring |